

JANUARY 2024



THE RATTLE 'RAG

TREASURE VALLEY MODEL A
FORD CLUB OF AMERICA

**Happy
New Year**

WELCOME 2024!

This New Year is like a new book with 12 chapters, and 366 blank pages, and you are the author of this story.

My wish is that you write the most beautiful story possible for yourself.

Include your family and friends on the pages of each chapter.

Include health and safety measures and activities for fun.

Prepare to participate in Treasure Valley Model A Club tours and meetings.

Serve your neighbors and accept service from others with grace.

Support and contribute to Club activities.

Seek help with maintaining your Model A at Hightower's Garage. Share your knowledge with fellow club members as they work on their cars.

Share your smiles, hugs, and friendship.

HAPPY NEW YEAR

INSIDE THIS ISSUE

HAPPY NEW YEAR!	1
Index / TVMAC Officers / Does Your Car Have a Shimmy?/ Video Link to Rebuild Distributors	2
Calendar / Activities / New Location for our monthly meetings Sam Stone's Christmas Eve	3
Glen Clayton's Obituary	4
Glen's Graveside Service Pictures	5
More Graveside Service Pictures	6
Lady A's / Mary Brooks Pickens: Model A Era Fashions	7
Membership	8

DOES YOUR CAR HAVE A SHIMMY?

A loose ball in the front wishbone at the transmission can be one of the causes of a front shimmy.

The front end caster (5 degrees) is dependent on the exact position of the front radius ball. Make sure you have all the correct pieces to mount the radius ball to the bottom of the fly-wheel housing. It should consist of an upper and lower cap, two spacers that fit through the mounting holes in the lower cap, two springs, and two castle nuts. If the assembly is correct and the ball does not fit tight, purchase or make a shim out of a thin fender washer, pounded to fit around the top half of the radius ball and reinstall the cap assembly. Then measure the front end caster. Also make sure the tie rod balls are round and the drag link ends are screwed in tight enough — check Lew Andrews Mechanics Handbook for specific settings. Toe-in should be 1/16" to 1/8". Also make sure the mounting bolts for the steering gear box are very tight. Worn king pins and/or bushings can contribute as well. All these things relate to a front end shimmy. The most over looked cause is incorrect front end caster adjustment. This is determined by the position of the radius rod ball.

- Tulsa A's

2024 TVMAC Officers

President: Chuck Nelson
 Vice President: Rob Spofford
 Secretary: Lora Eggan
 Treasurer: Arlan Potts
 Membership: Arlan Potts
 National Rep: Jim Borchers
 Sunshine Committee: Joanie Calhoun
 Lady A's: Stephanie Stapleton
 Newsletter: JoAnn Blout

Jim Borchers provided a "youtube" link to a video produced by the Evergreen A's in Washington about rebuilding Model A distributors.

<https://youtube.com/watch?v=AXzA2Da40Fg>

Deadline for pictures, stories, flyers, current events, etc. in next month's The Rattlin' Rag is:
Monday,
February 12, 2024
 Please email to
 JoAnn Blout

Club annual dues for 2024 are now due. Pay \$20 per family to Arlan Potts at Club Meetings or mail to his home address.

Arlan Potts

**10921 West Montana
 Boise, ID 83713-5048**

CALENDAR OF EVENTS:

FEBRUARY 2024

				1	2	3
4	5	6	7	8 Club Meeting	9	10
11	12	13	14	15	16	17
18	19	20	21	22	23	24
25	26	27	28	29 Leap Day		

Local Events:
Mechanics Garage:
 Hightower's Garage: call Elvin to schedule the day and time to get expert help with your project.
Next Club Meeting:
 February 8, 2024 at Great Wall Restaurant, 10398 W Overland Rd, Dinner at 6:00 p.m., Meeting at 7:00
Save The Date:
 April 13, 2024 Tour being planned by Chuck and Marilyn Nelson. Watch emails for information about Hubley Races in February or March.

SAM STONE'S CHRISTMAS EVE

'Twas the night before Christmas and all along the way, not a creature was stirring 'cept for I in my "A". I decided that Christmas Eve night was the perfect time to wander the empty, quiet streets with our family's 1930 Ford Model A standard coupe. That, and the fact the rest of the family was home sick with COVID. I took back roads from west Meridian toward Chinden, and then up to State Street. Luckily the roads were all pretty empty that night. I found myself in downtown Eagle with hardly another car in sight. The local Heritage Park was nicely decorated with a large Christmas Tree and lights on every pole surrounding the pavilion. The temperature was slightly below freezing, and trust me, the temperature inside the Model A was not much higher. Thankfully there was no moisture or ice on the road that night, but I still drove like I was riding on glorified bicycle tires. Eventually, after taking a few pictures, I made my way home to find someone had nibbled on the cookies and drunk some of the milk that our 4-year-old Ethan had helped set out. Could it have been Santa? Perhaps, but the dog looked awfully happy sleeping contently on the sofa.
 Merry Christmas,
 The Stone Family



FAREWELL TO GLEN CLAYTON

Funeral Services for Glen Eugene Clayton, 90 years, of Nampa, ID, who died Wednesday December 20, 2023 at home, will be conducted at 11 a.m. Saturday December 30 at the Nampa First Ward of The Church of Jesus Christ of Latter-day Saints by Bishop Rob Mickelsen. Interment will follow at Cloverdale Cemetery, Boise, ID.

Glen was born October 20, 1933, at Hazel (Burley), ID. Attended schools there until the eighth grade. Later received his GED and went on to complete his BS and MS in Mechanical Engineering from Western Kennedy. He enjoyed designing machinery and equipment especially with materials from the junk yard.

Glen started mining and crushing granite for chickens which he delivered to local feed stores, which become Clayton's Calcium & Granite Products. He moved the business to Boise, then south of Meridian and later to Parma, Idaho.

In 1952, Glen met the love of his life, Wilda Kingsford and they married in June of 1953 in the Idaho Falls Temple. It was a great love story, that has endured 70 plus years of living and will endure for eternity.

He was very active in his Church, The Church of Jesus Christ of Latter-day Saints, and served a mission in Russia with his wife. Together they attended and served in the temple for many years. For over 25 years, he was very active with the Boy Scout Organization, helping boys on their trail to Eagle. He also received the Silver Beaver Award.

Glen was active in the local Model A Club. He enjoyed rebuilding 1929 Model A's... the car of his youth! He finished car #21 and car #22 just before his passing. "Glen's Toy Box" was open to all for any help. Plus, he has a unique collection of antique wrenches.

Glen is survived by his wife Wilda K. Clayton, five of his six children, Diane Huffman, Duane (Debra), Gary (Tricia), Rena Hastings, and Todd (Lisa), 35 grandchildren, 45 great-grandchildren, and 2 great-great-grandchildren.

He was preceded in death by Kim Lynn Clayton – Son, Dallin Andre' Clayton – Grandson, Arley Eugene Clayton – Father, Emily Marie Taylor Clayton – Mother and Alta Fern Clark – Sister.

GLEN CLAYTON FAREWELL CONTINUED

Over 40 Treasure Valley Model A Club members attended the funeral services for Glen Eugene Clayton and 13 Model A cars drove to the cemetery to honor our long time club member, teacher, and mentor. It was a beautiful service with grandson Seth Clayton giving his life sketch and club member Jim Borchers giving the closing remarks. Glen will be missed and we will support Wilda during this hard time and beyond.

Graveside Service

Flag folding ceremony (left)
Presentation of the flag to Wilda
(below)

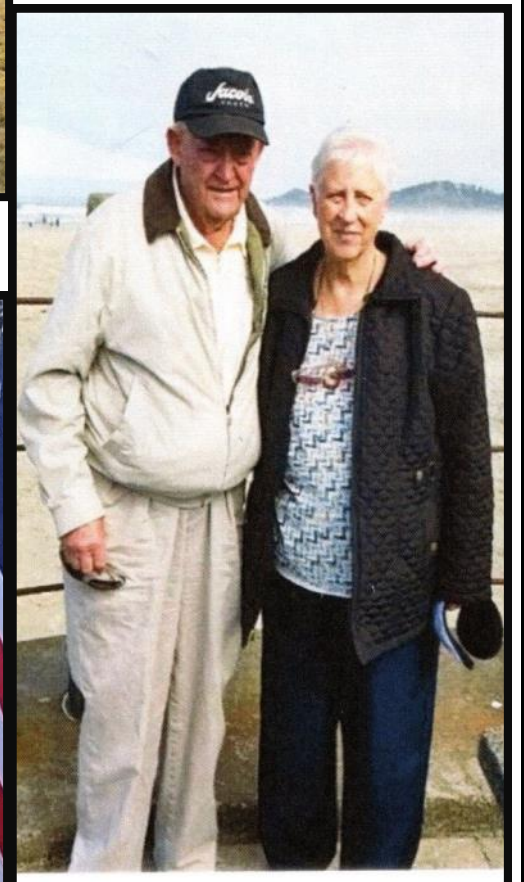
(Pictures and information by Judi Ornellas)



MORE PICTURES FROM CEMETERY

Some of the thirteen Model A's that went to the cemetery.

Glen and his sweetheart Wilda pictured together. (bottom right)





**Mary Brooks Picken
Circ 1918
Photo Published in her
book, "Secrets of
Distinctive Dress"**

(From Wikipedia)



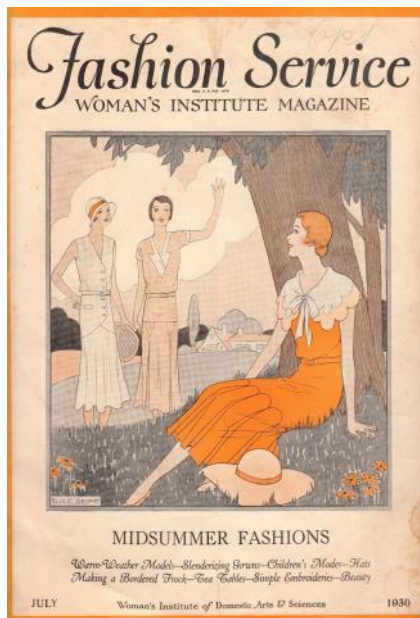
MEET MARY BROOKS PICKEN

Mary Brooks Picken was a relatively unknown but very influential woman during the Model A Era. She founded the Women's Institute of Domestic Arts and Sciences in 1916, and was an expert on fashion, fabric, design, and sewing. She published literally dozens of articles about making dresses, underpinnings, hats, drafting patterns, and using different textiles.

In 1927 she helped moved women from being clothing menders to seamstresses capable of improving their lives and making money with their brand new Singer Sewing Machines!

She was the premier authority on fashion for many years. Beginning in 1927 her "Fashion Service" publications helped women of the Model A Era use their sewing machines to make clothes for themselves and their families from underwear and lingerie to couture fashion. She taught them how to make draperies and slip covers to decorate their homes. She also taught them how to make tissue paper patterns to create their own fashions.

(Below are examples of pages from one of her publications.)



The Treasure Valley A's is a Model A Ford automobile club located in the Boise area of Idaho. We are dedicated to the restoration and preservation of the Model A Fords from 1928 through 1931 by the Ford Motor Company. Membership is not limited to owners and is open to anyone interested in preserving the memory of our past and the great impact that Henry Ford made upon the world with his Model A.

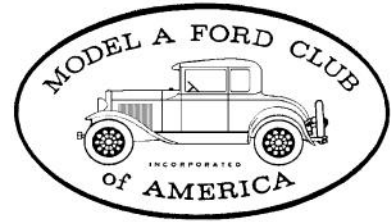
The Treasure Valley A's have had a long history in the city of trees. Many of the club's members have spent most of their lives here in the area. The club was formed around 1963 and its membership consisted of only eight couples and a few cars. Since then the club has grown to well over a hundred and thirty and is one of the most active antique car clubs in the state.

We would love to hear from you or even better, stop by our next event.

Treasure Valley Model A Ford Club of America

10921 West Montana Ave.

Boise ID 83713-5048



TREASURE VALLEY
MODEL A FORD CLUB OF
AMERICA

Visit us on the web at: <http://www.tvmaclub.com/>

Facebook page: <https://www.facebook.com/TVMACIdaho/>

Twitter page: https://twitter.com/TVMAC_ID

Interest in becoming a MAFCA member?

Go to: <http://www.mafc.com/>